



Journal of Histochemistry & Cytochemistry  
**2025 CALENDAR**

**Editor-In-Chief**

**Stephen M. Hewitt**  
Bethesda, MD, USA

**Executive Editor**

**Denis G. Baskin**  
Univ of Washington  
Seattle, WA, USA

**Associate Editors**

**Charles W. Frevert**  
Univ of Washington  
Seattle, WA, USA

**Douglas L. Rosene**  
Boston Univ  
Boston, MA, USA

**Cornelis J. Van Noorden**  
Amsterdam Univ Medical Centers  
Amsterdam, The Netherlands

**Editorial Board**

**Dale R. Abrahamson**  
Univ of Kansas  
Kansas City, KS, USA

**Eugenio Bertelli**  
Univ of Siena  
Siena, Italy

**Steven A. Bogen**  
Tufts Medical Center  
Boston, MA, USA

**Cord Brakebusch**  
Univ of Copenhagen  
Copenhagen, Denmark

**Amy Chadburn**  
New York Presbyterian/ Weill Cornell  
New York, NY, USA

**Liang Cheng**  
Indiana Univ  
Indianapolis, IN, USA

**Pasquale Chieco**  
St. Orsola-Malpighi Univ Hosp  
Bologna, Italy

**A. Sally Davis**  
Manhattan, KS, USA

**Emanuel DiCicco-Bloom**  
Robert Wood Johnson Med Sch  
Piscataway, NJ, USA

**Toyoshi Fujimoto**  
Nagoya Univ  
Nagoya, Japan

**Emanuela Gussoni**  
Boston Children's Hosp  
Boston, MA, USA

**David H. Hall**  
Albert Einstein College of Med  
Bronx, NY, USA

**Rebecca L. Hull**  
Univ of Alberta  
Edmonton, Alberta, Canada

**Helen Irving-Rodgers**  
Griffith Univ  
Queensland, Australia

**Yoshifumi Itoh**  
Univ of Oxford  
Oxford, UK

**Nirag Jhala**  
Temple Univ  
Philadelphia, PA, USA

**Thomas Liehr**  
Univ of Jena  
Jena, Germany

**Stephen J. Lockett**  
Frederick, MD, USA

**Robin G. Lorenz**  
Genentech, Inc  
South San Francisco, CA, USA

**Kant Matsuda**  
Rutgers University  
Brunswick, NJ, USA

**Alfredo A. Molinolo**  
Univ of California, San Diego  
San Diego, CA, USA

**Constance Oliver**  
Univ of São Paulo  
São Paulo, Brazil

**Robert Y. Osamura**  
International Univ of Health & Welfare  
Tokyo, Japan

**Fredrik Pontén**  
Uppsala Univ  
Uppsala, Sweden

**Kevin A. Roth**  
San Mateo, CA, USA

**Nancy M. Sawtell**  
Cincinnati Children's Hosp Medical Center  
Cincinnati, OH, USA

**Liliana Schaefer**  
Goethe Univ  
Frankfurt, Germany

**Julie Schneider**  
Rush University (ADC)  
Chicago, IL, USA

**Rosa Serra**  
Univ of Alabama at Birmingham  
Birmingham, AL, USA

**Jennifer L. Stow**  
Univ of Queensland  
Queensland, Australia

**Douglas J. Taatjes**  
Univ of Vermont  
Burlington, VT, USA

**Marc Thiry**  
Univ of Liege  
Liege, Belgium

**Yasuo Uchiyama**  
Juntendo Univ  
Tokyo, Japan

**Martin Wessendorf**  
Univ of Minnesota  
Minneapolis, MN, USA

**Thomas N. Wight**  
Benaroya Research Inst  
Seattle, WA, USA

**Zipora Yablonka-Reuveni**  
Univ of Washington  
Seattle, WA, USA

**Atsuko Yoneda**  
Tokyo Univ of Pharmacy and Life Sciences  
Tokyo, Japan

---

**Editorial Office**

**JHC Office of Publications**  
1801 Rockville Pike, Suite 350  
Rockville, MD, USA

**Managing Editor**

**Renee Mooneyhan**  
JHC Office of Publications  
Rockville, MD, USA



The Histochemical Society, owner of the *Journal of Histochemistry & Cytochemistry*, is a not-for-profit organization of scientists devoted to fostering developments in molecular and cellular morphology. The Society supports scientific meetings and publications that emphasize the use of molecular and morphological techniques. The Histochemical Society increases the knowledge of the interrelationship of the chemical constitution and detailed morphologic structure of living organisms, both in normal and pathological states. Since 1953, the *Journal of Histochemistry & Cytochemistry* has continually published many firsts in cell biology through the Society's print and online journal. This fundamental dissemination of research will carry forward into the future.

## OFFICERS

### President

**A. Sally Davis**  
Manhattan, KS, USA

### President-Elect

**Joseph Cheatwood**  
Southern Illinois Univ  
Springfield, IL, USA

### Immediate Past-President

**Alejandro P. Adam**  
Albany Medical College  
Albany, NY, USA

### Past-President

**Liliana Schaefer**  
Goethe Univ  
Frankfurt, Germany

### Secretary/Treasurer

**Scott M. Tanner**  
University of South Carolina Upstate  
Spartanburg, SC, USA

### Editor-In-Chief

**Stephen M. Hewitt**  
Bethesda, MD, USA

### Executive Director

**Kendra LaDuca**  
The Histochemical Society  
Rockville, MD, USA

### Managing Editor

**Renée Mooneyhan**  
JHC Office of Publications  
Rockville, MD, USA

### Executive Council

**Babajide Ajayi**  
Ajayi Crowther University  
Oyo, Nigeria

### Francesca Duncan

Northwestern Univ Feinberg School Of Med  
Chicago, IL, USA

### Tracey Fischer

Tulane National Primate Research Center  
Covington, LA USA

### Charles W. Frevert

Univ of Washington  
Seattle, WA, USA

### Delphine Gomez

Univ of Pittsburgh  
Pittsburgh, PA, USA

### Roberto Mota Alvidrez

University of New Mexico,  
Albuquerque, NM, USA

### Awards Committee

**Francesca Duncan, Chair**  
Northwestern Univ Feinberg School of Med  
Chicago, IL, USA

### Alejandro P. Adam

Albany Medical College  
Albany, NY, USA

### Paulo Tambasco De Oliveira

Univ of Sao Paulo  
Brazil

### Delphine Gomez

Univ of Pittsburgh  
Pittsburgh, PA, USA

### Roberta Okamoto

UNESP  
Bilac, Brazil

### Scott M. Tanner

University of South Carolina Upstate  
Spartanburg, SC, USA

### Membership, Diversity, Equity, and Inclusion Committee

### Alejandro P. Adam, Chair

Albany Medical College  
Albany, NY, USA

### Babajide Ajayi

Ajayi Crowther University  
Oyo, Nigeria

### Nathaniel Lartey

University of Michigan,  
Ann Arbor, MI, USA

### Robin G. Lorenz

Genentech, Inc  
South San Francisco, CA, USA

### Kelley Murphy

Morgan State University  
Baltimore, MD, USA

### Amber Ortiz

Indica Labs  
Albuquerque, NM USA

### Robby Van Sciver

Emory University  
Atlanta, GA USA

### Scott M. Tanner

University of South Carolina Upstate  
Spartanburg, SC, USA

### Communication Committee

**Roberto Mota-Alvidrez, Chair**  
University of New Mexico  
Albuquerque, NM USA

### Nathaniel Lartey

University of Michigan,  
Ann Arbor, MI, USA

### Jody Longo

Medical Univ of South Carolina  
Charleston, SC, USA

### John W. Peterson

Cleveland Clinic Foundation  
Cleveland, OH, USA

### Kate Tubbesing

Albany Medical College  
Albany, NY, USA

### Education Committee

**Joseph Cheatwood, Chair**  
Southern Illinois Univ  
Springfield, IL, USA

### Babajide Ajayi

Ajayi Crowther University  
Oyo, Nigeria

### Steven Carroll

Medical Univ of South Carolina  
Charleston, SC, USA

### Joseph G. Daft

Lee Univ  
Cleveland, TN, USA

### Karen Dubois Camacho

University Medical Center Groningen  
Groningen, Netherlands

### Scott M. Tanner, Chair

University of South Carolina Upstate  
Spartanburg, SC, USA

### Finance Committee

**Scott M. Tanner, Chair**  
University of South Carolina Upstate  
Spartanburg, SC, USA

### Margarida Barroso

Albany Medical College  
Albany, NY, USA

### Charles W. Frevert

Univ of Washington  
Seattle, WA, USA

### Douglas L. Rosene

Boston Univ  
Boston, MA, USA

### Program Committee

**Liliana Schaefer, Chair**  
Goethe Univ  
Frankfurt, Germany

### Charles W. Frevert

Univ of Washington  
Seattle, WA, USA

### Douglas L. Rosene

Boston Univ  
Boston, MA, USA

### Publications Committee

**Denis G. Baskin, Ex Officio**  
Univ of Washington  
Seattle, WA, USA

### Eduardo Rosa-Molinar

Univ of Kansas  
Lawrence, KS, USA

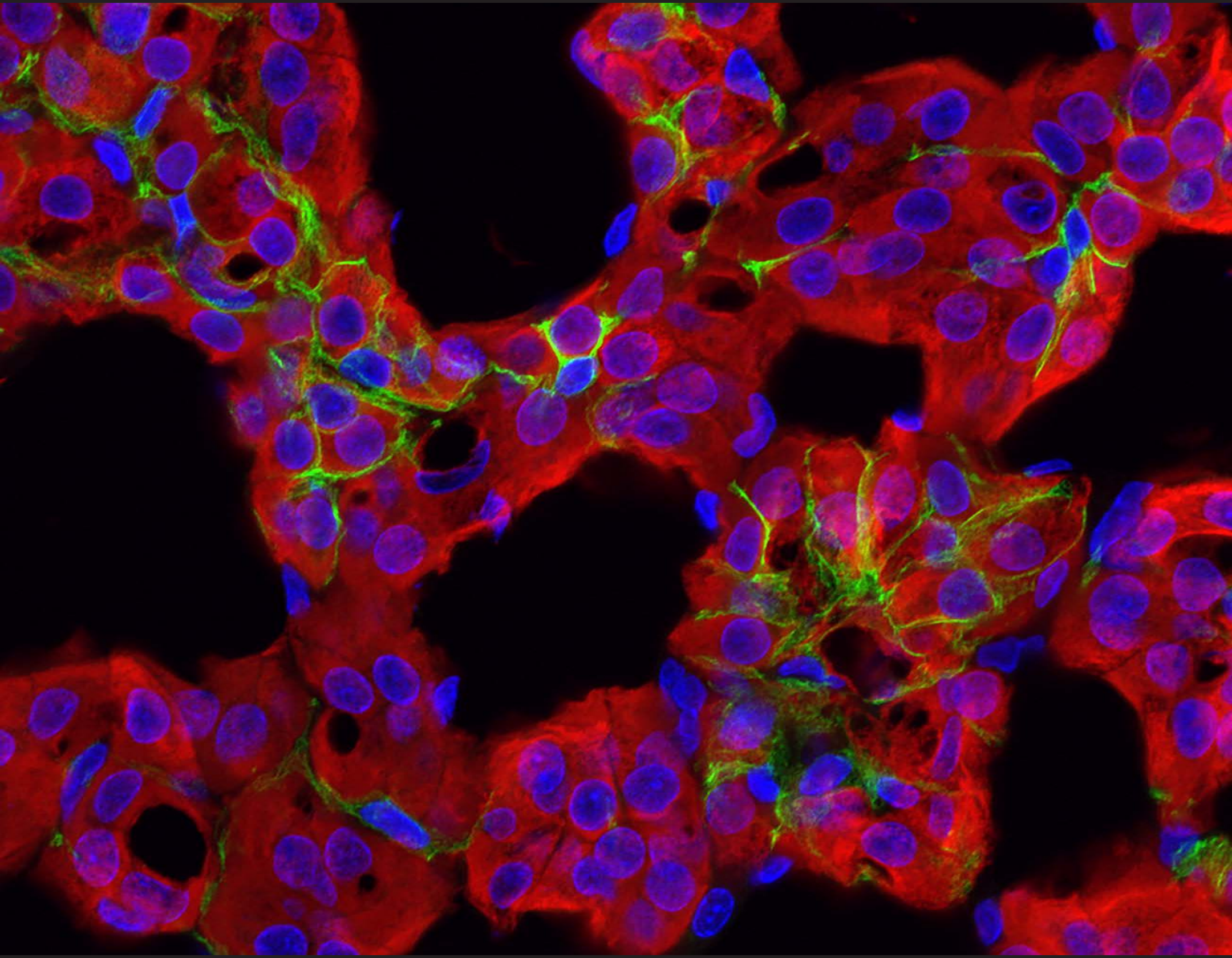
### Business Office

**The Histochemical Society**  
1801 Rockville Pike, Suite 350  
Rockville, MD, 20852

### Editorial Office

**JHC Office of Publications**  
1801 Rockville Pike, Suite 350  
Rockville, MD, 20852

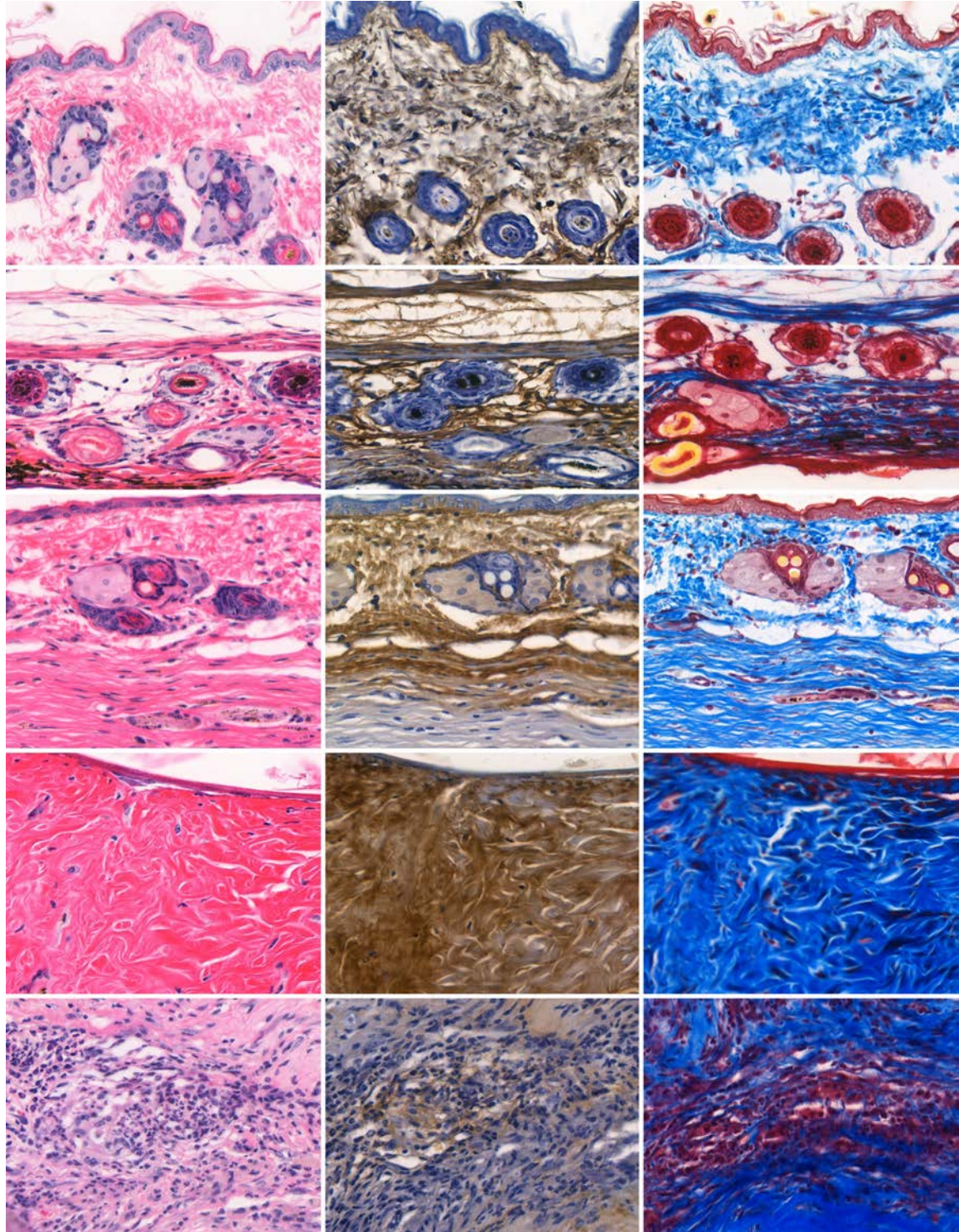




# January 2025

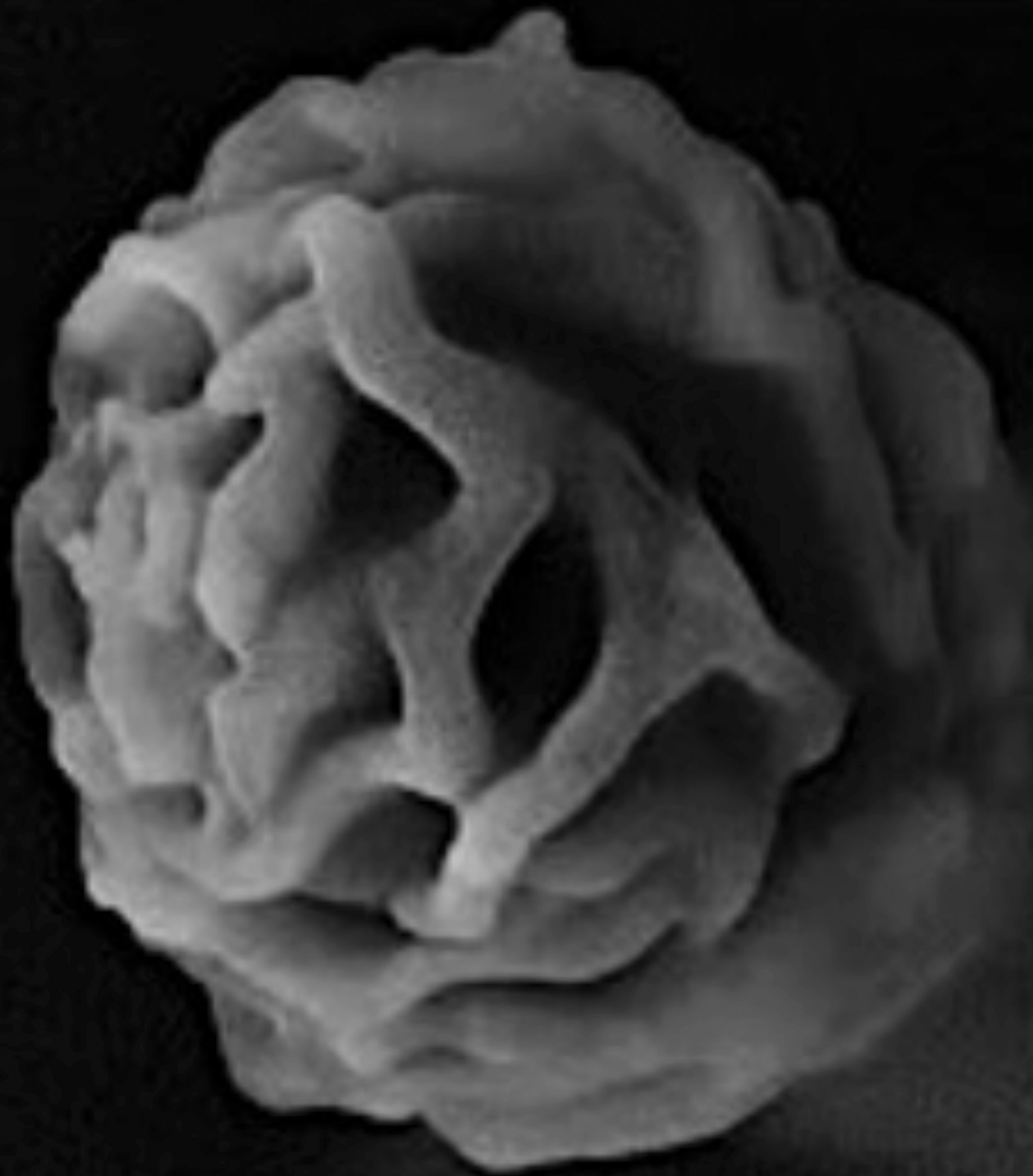
SUNDAY	MONDAY	TUESDAY	WEDNESDAY	THURSDAY	FRIDAY	SATURDAY
			1	2	3	4
		New Year's Eve	New Year's Day			
5	6	7	8	9	10	11
12	13	14	15	16	17	18
19	20	21	22	23	24	25
	Martin Luther King, Jr. Day Inauguration Day					
26	27	28	29	30	31	1
2	3	4	5	6	7	8





# February 2025

SUNDAY	MONDAY	TUESDAY	WEDNESDAY	THURSDAY	FRIDAY	SATURDAY
9	10	28	29	30	31	1
2	3	4	5	6	7	8
Groundhog Day						
9	10	11	12	13	14	15
					Valentine's Day	
16	17	18	19	20	21	22
	Presidents' Day					
23	24	25	26	27	28	1
2	3	4	5	6	7	8

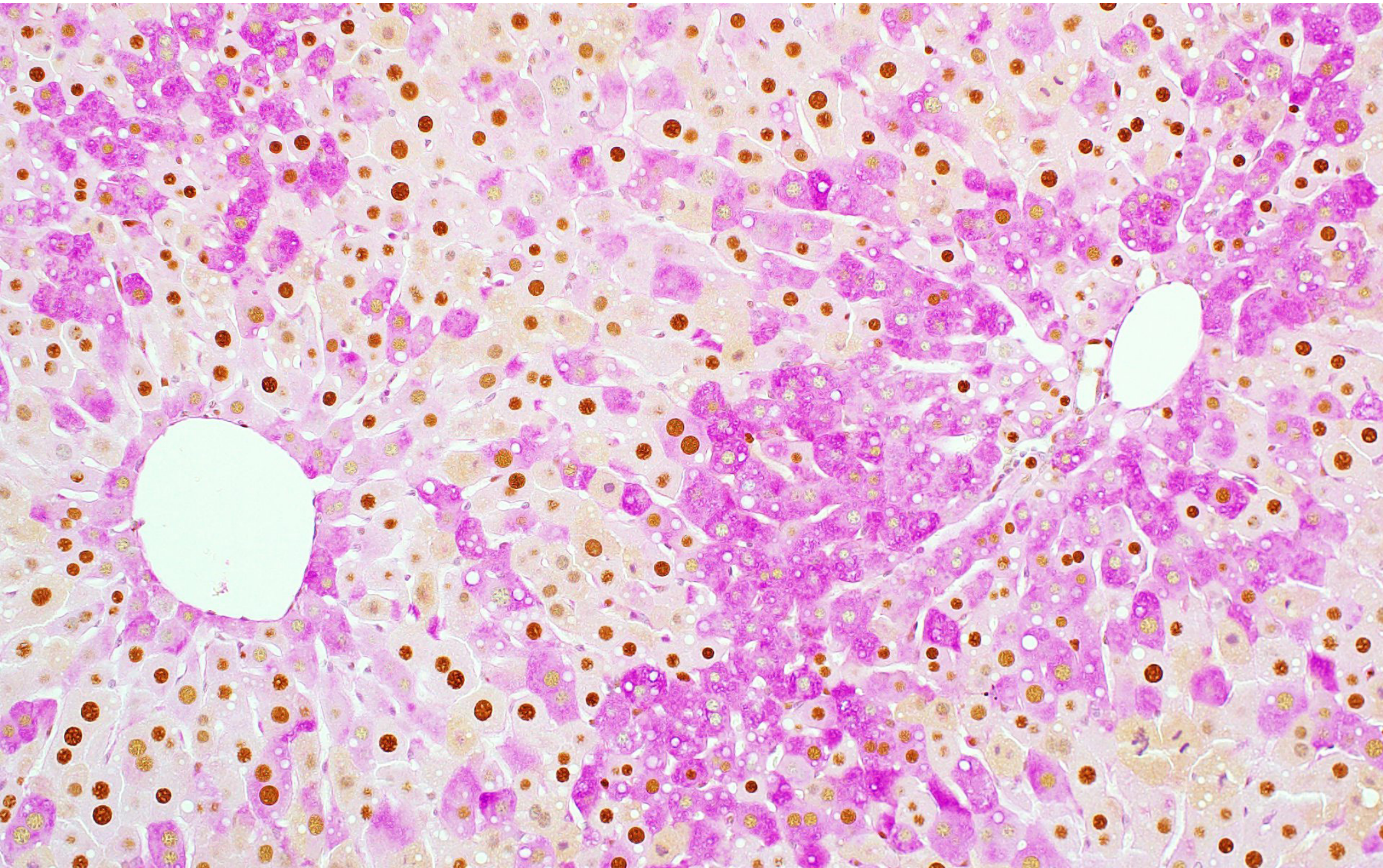




# March 2025

SUNDAY	MONDAY	TUESDAY	WEDNESDAY	THURSDAY	FRIDAY	SATURDAY
9	25	26	27	28	29	1
2	3	4	5	6	7	8
9	10	11	12	13	14	15
Daylight Saving Time Begins	17	18	19	20	21	22
16	St. Patrick's Day	25	26	27	28	29
23	24	1	2	3	4	5
30	31					

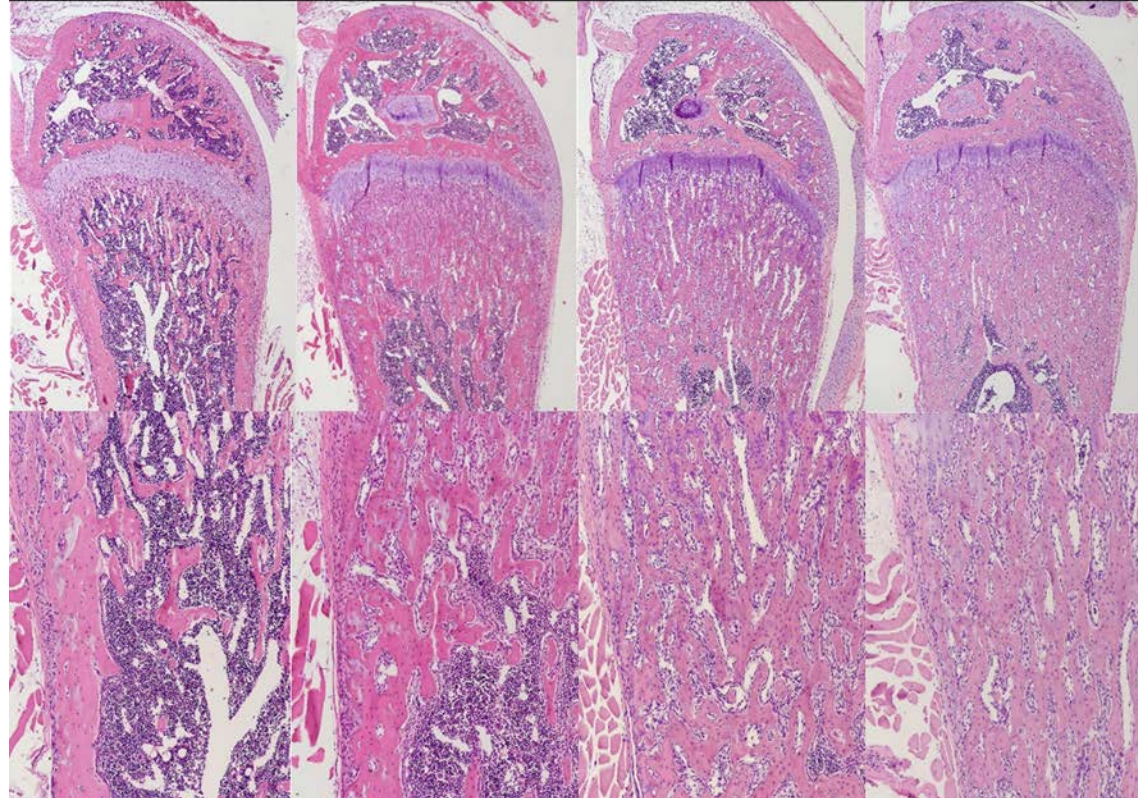
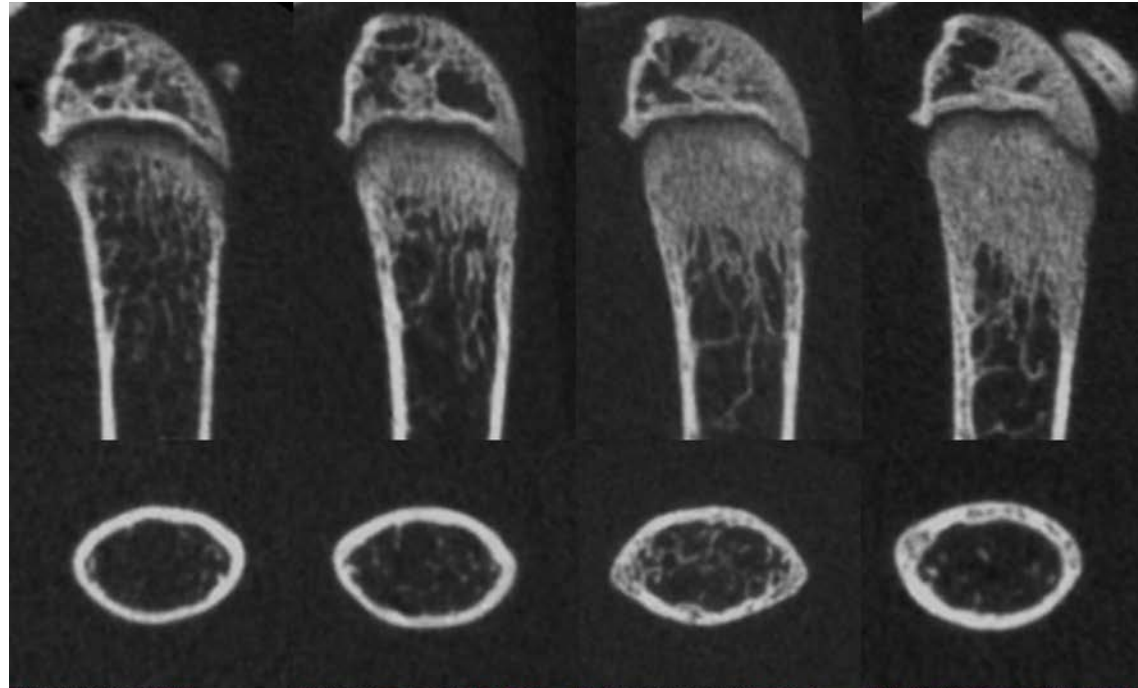






# April 2025

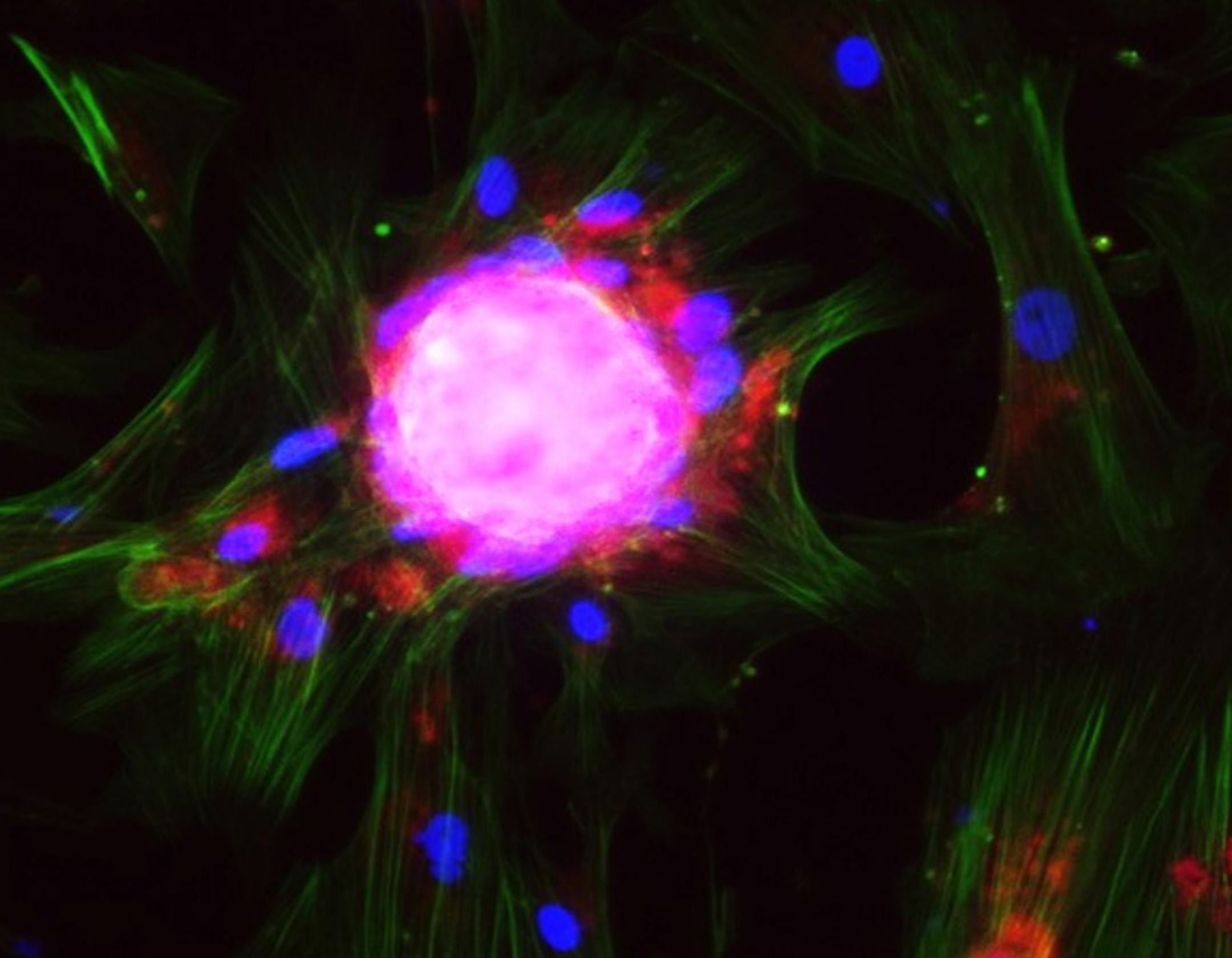
SUNDAY	MONDAY	TUESDAY	WEDNESDAY	THURSDAY	FRIDAY	SATURDAY
6	31	1	2	3	4	5
6	7	8	9	10	11	12
13	14	15	16	17	18	19
		Tax Day				
20	21	22	23	24	25	26 ASIP Annual MTG...
27 ...ASIP Annual Meeting: Pathobiology 2025 Mechanisms of Disease	28	29	30	1	2	3 Analytical and Quantitative Light Microscopy at Marine Biological Laboratory, Woods Hole, MA...
4	5	6	7	8	9	10 ... Analytical and Quantitative Light Microscopy at Marine Biological Laboratory, Woods Hole, MA





# May 2025

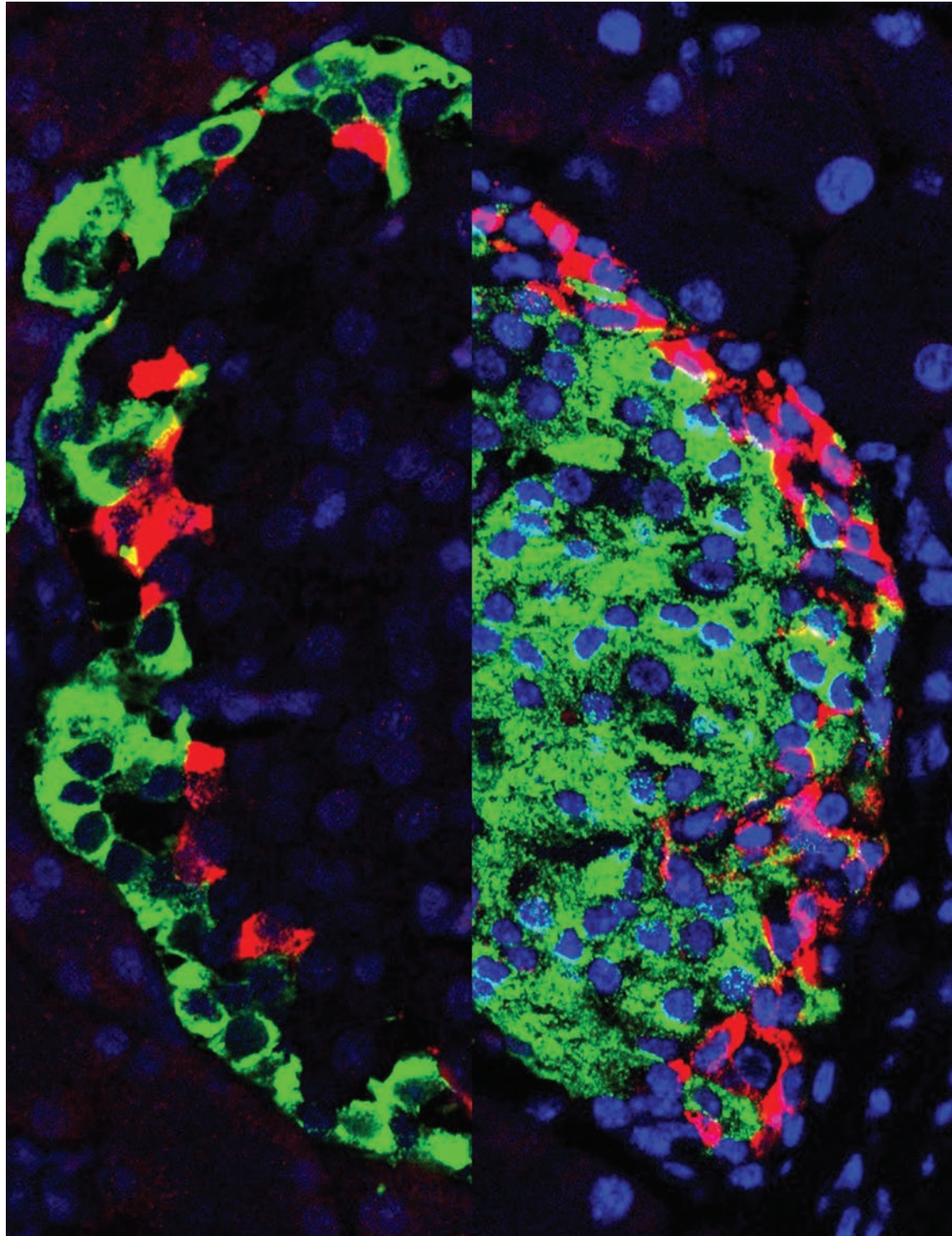
SUNDAY	MONDAY	TUESDAY	WEDNESDAY	THURSDAY	FRIDAY	SATURDAY
11	28	29	30	1	2	3
Analytical and Quantitative Light Microscopy at Marine Biological Laboratory, Woods Hole, MA ...						
4	5	6	7	8	9	10
... Analytical and Quantitative Light Microscopy at Marine Biological Laboratory, Woods Hole, MA						
11	12	13	14	15	16	17
Mother's Day						
18	19	20	21	22	23	24
25	26	27	28	29	30	31
	Memorial Day					
1	2	3	4	5	6	7





# June 2025

SUNDAY	MONDAY	TUESDAY	WEDNESDAY	THURSDAY	FRIDAY	SATURDAY
8	26 Memorial Day	27	28	29	30	31
1	2	3	4	5	6	7
8	9	10	11	12	13	14
22nd Annual Workshop on FLIM and FRET Microscopy						
15	16	17	18	19	20	21
Father's Day				Juneteenth		
22	23	24	25	26	27	28
29	30	1	2	3	4	5
					Independence Day	

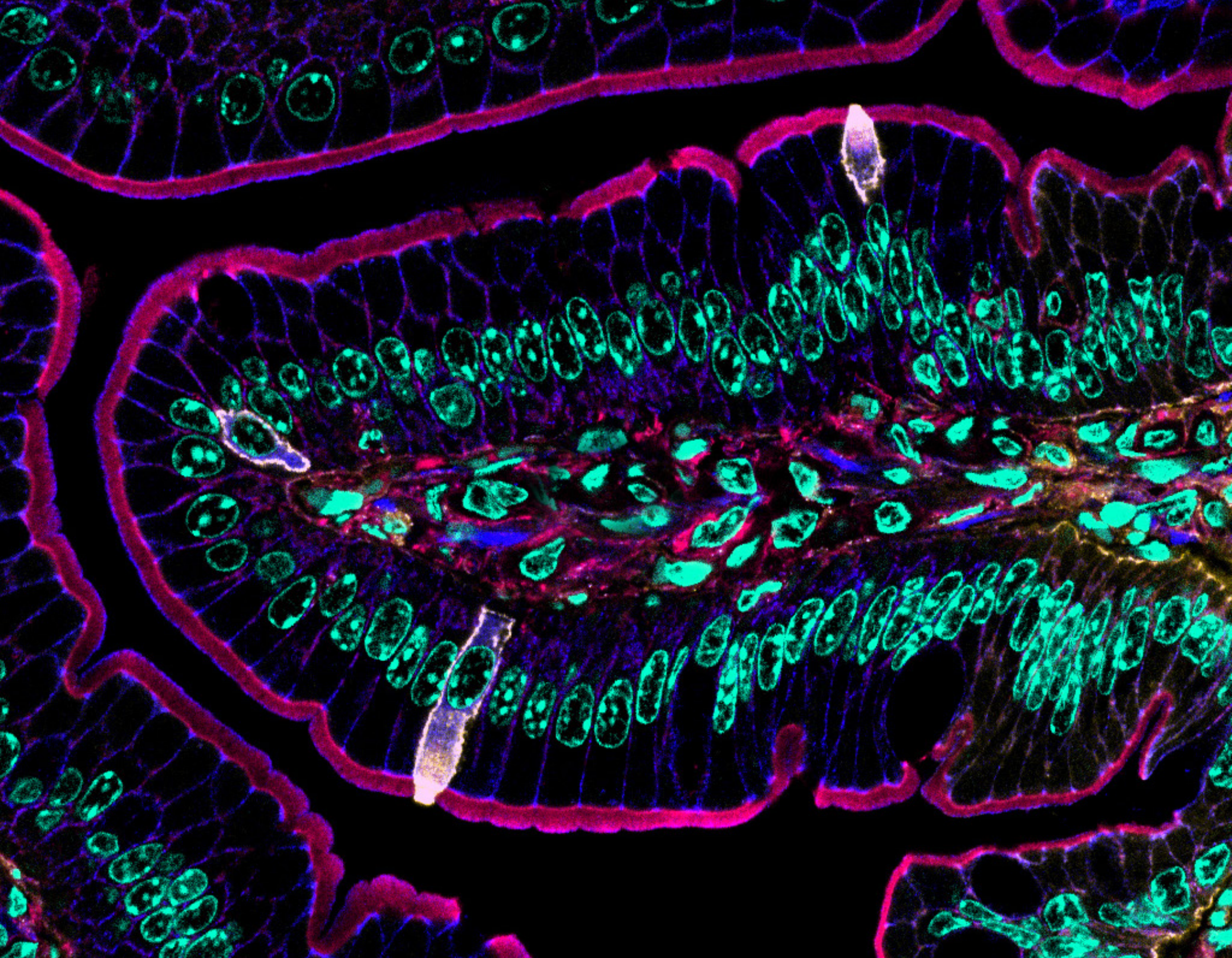




# July 2025

SUNDAY	MONDAY	TUESDAY	WEDNESDAY	THURSDAY	FRIDAY	SATURDAY
6	30	1	2	3	4 Independence Day	5
6	7	8	9	10	11	12
13	14	15	16	17	18	19
20	21	22	23	24	25	26
27	28	29	30	31	1	2
3	4	5	6	7	8	9

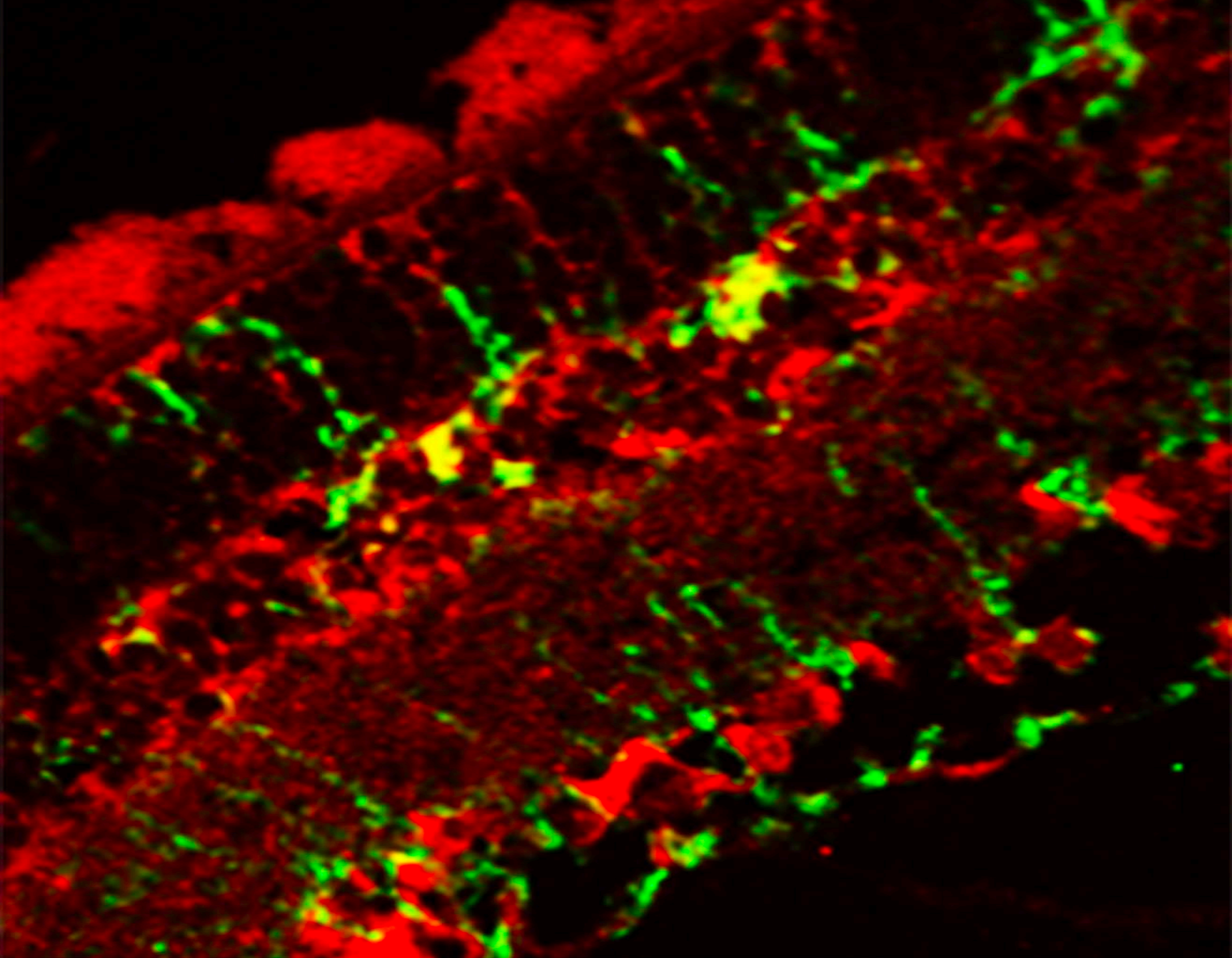






# August 2025

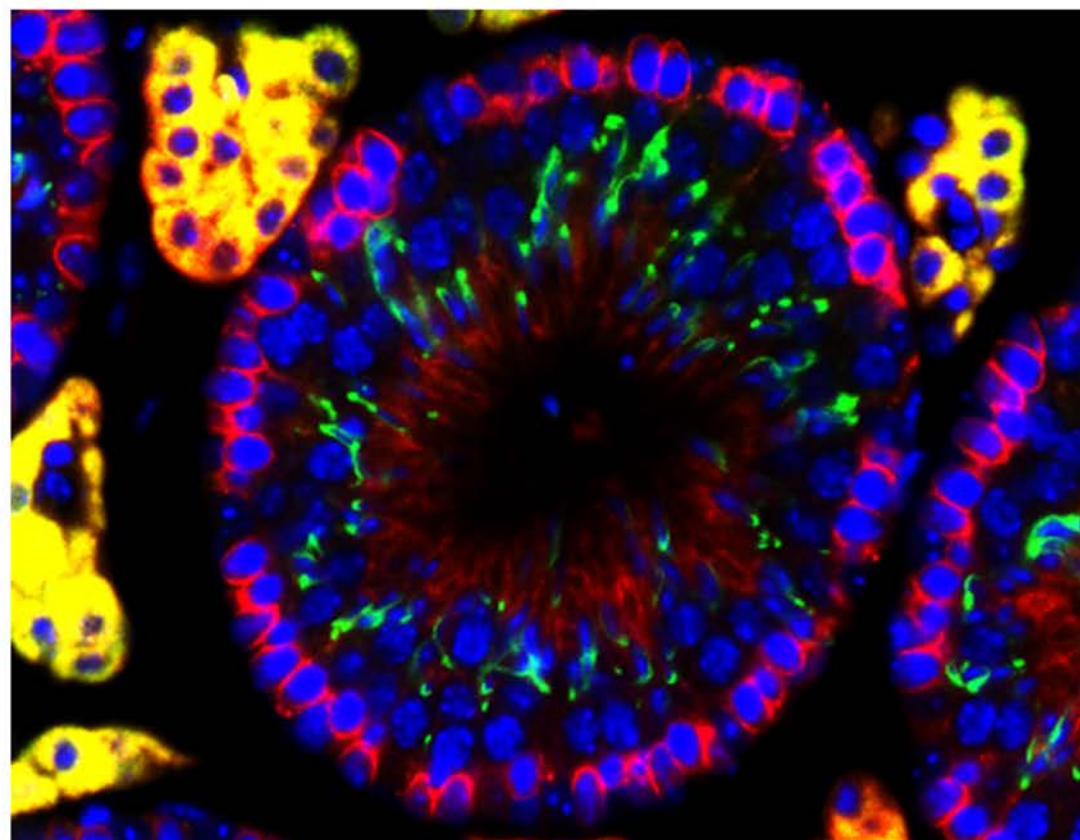
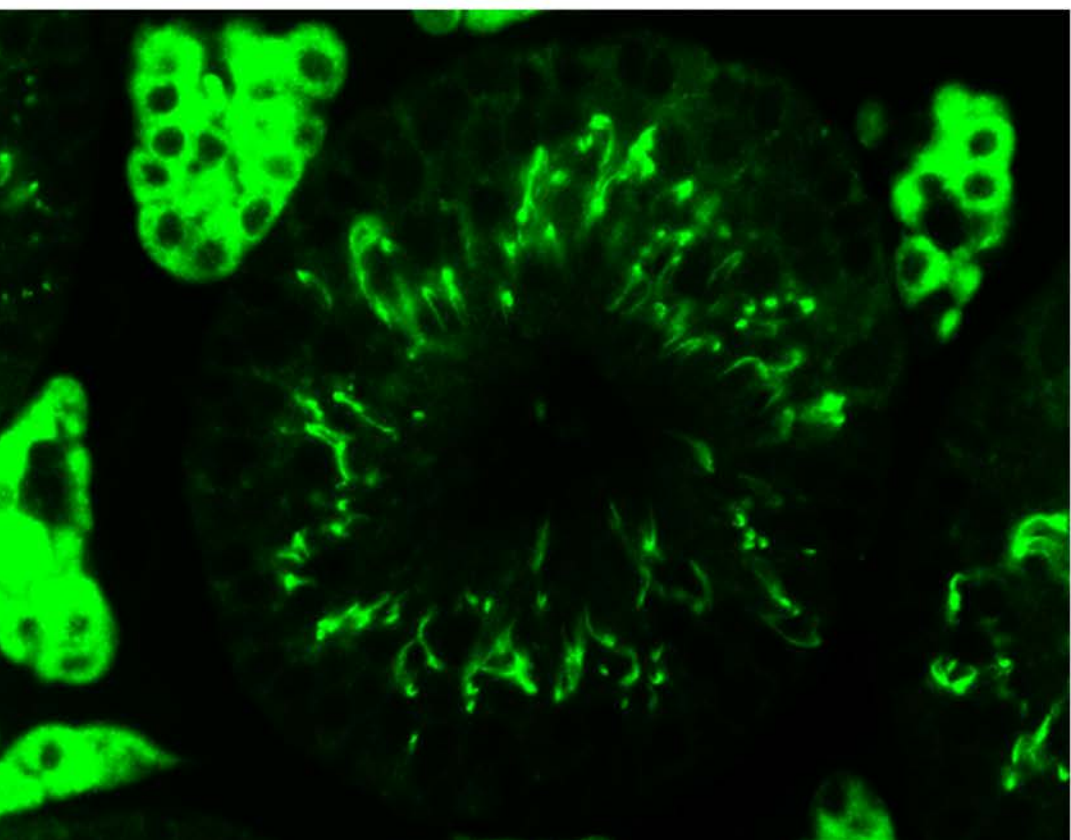
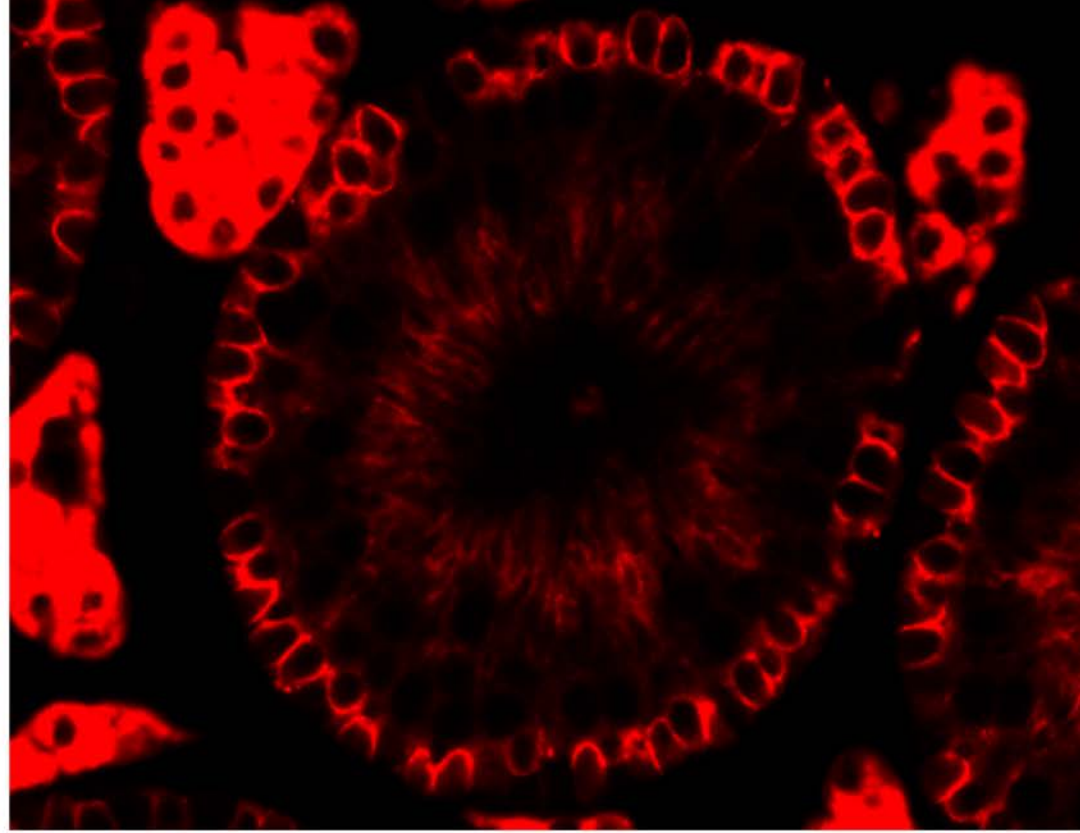
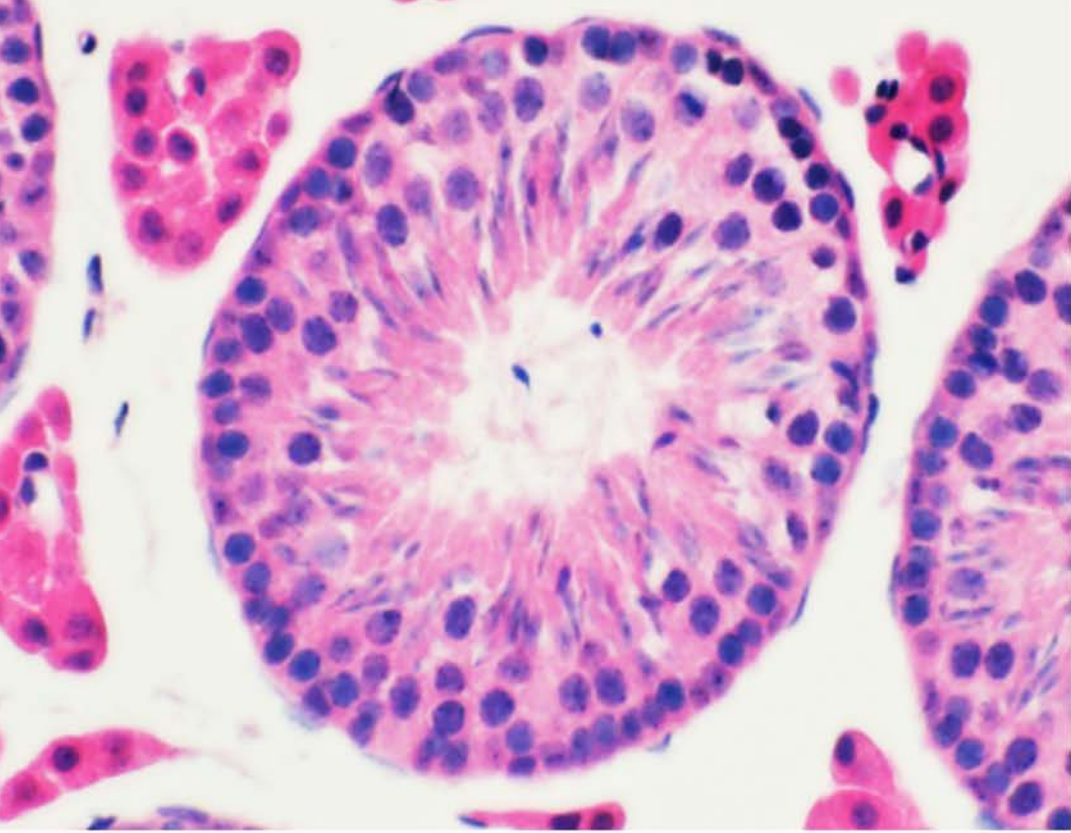
SUNDAY	MONDAY	TUESDAY	WEDNESDAY	THURSDAY	FRIDAY	SATURDAY
10	28	29	30	31	1	2
3	4	5	6	7	8	9
10	11	12	13	14	15	16
Optical Microscopy and Imaging in the Biomedical Sciences at Marine Biology Laboratory, Woods Hole, MA . . .						
17	18	19	20	21	22	23
. . . Optical Microscopy and Imaging in the Biomedical Sciences at Marine Biology Laboratory, Woods Hole, MA						
24	25	26	27	28	29	30
17th International Congress of Histochemistry and Cytochemistry, Rimini, Italy						
31	1	2	3	4	5	6
	Labor Day					





# September 2025

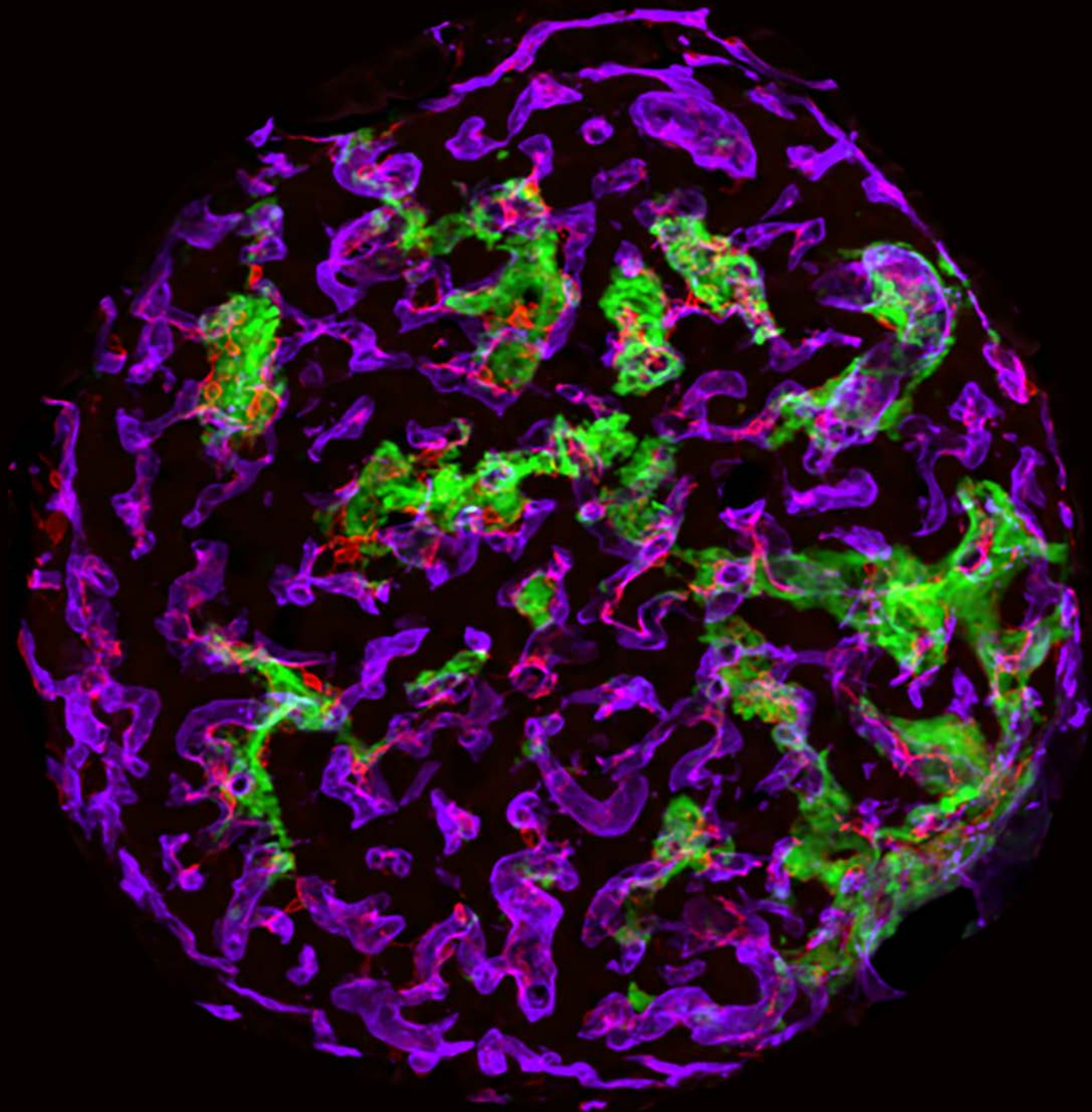
SUNDAY	MONDAY	TUESDAY	WEDNESDAY	THURSDAY	FRIDAY	SATURDAY
7	1 Labor Day	2	3	4	5	6
7	8	9	10	11	12	13
14	15	16	17	18	19	20
21	22	23	24	25	26	27
28	29	30	1	2	3	4
5	6	7	8	9	10	11





# October 2025

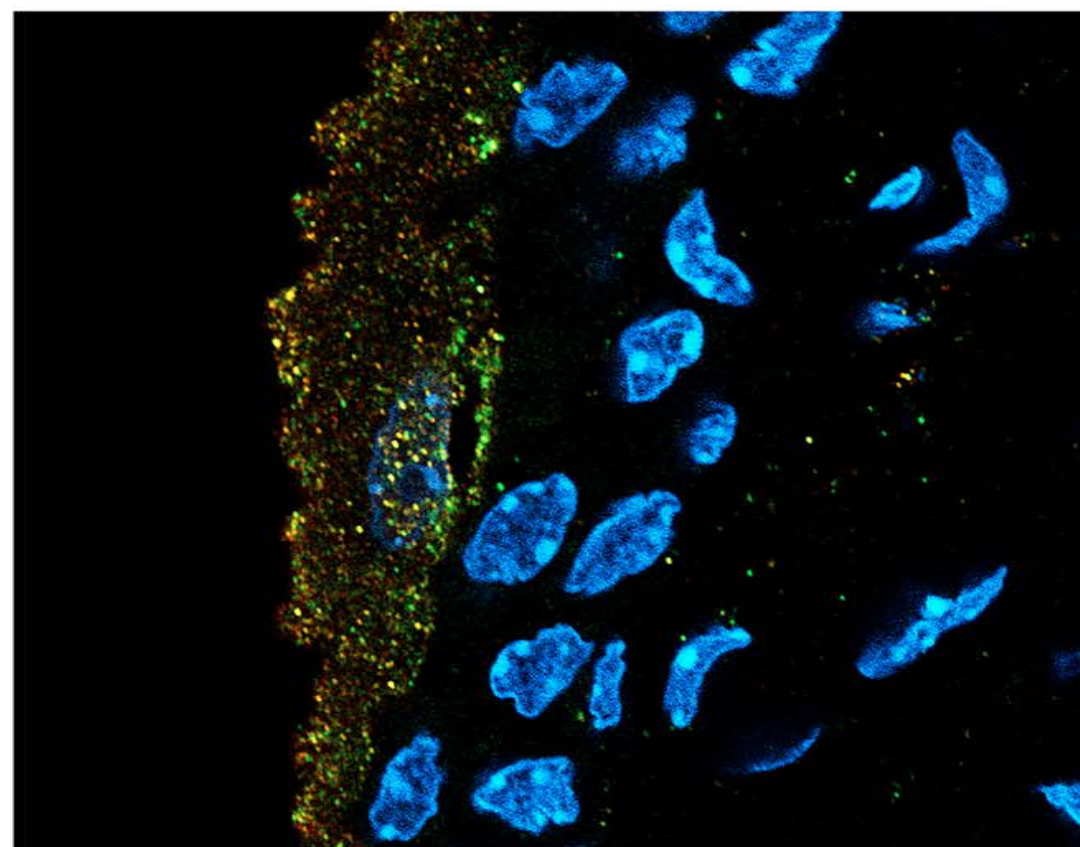
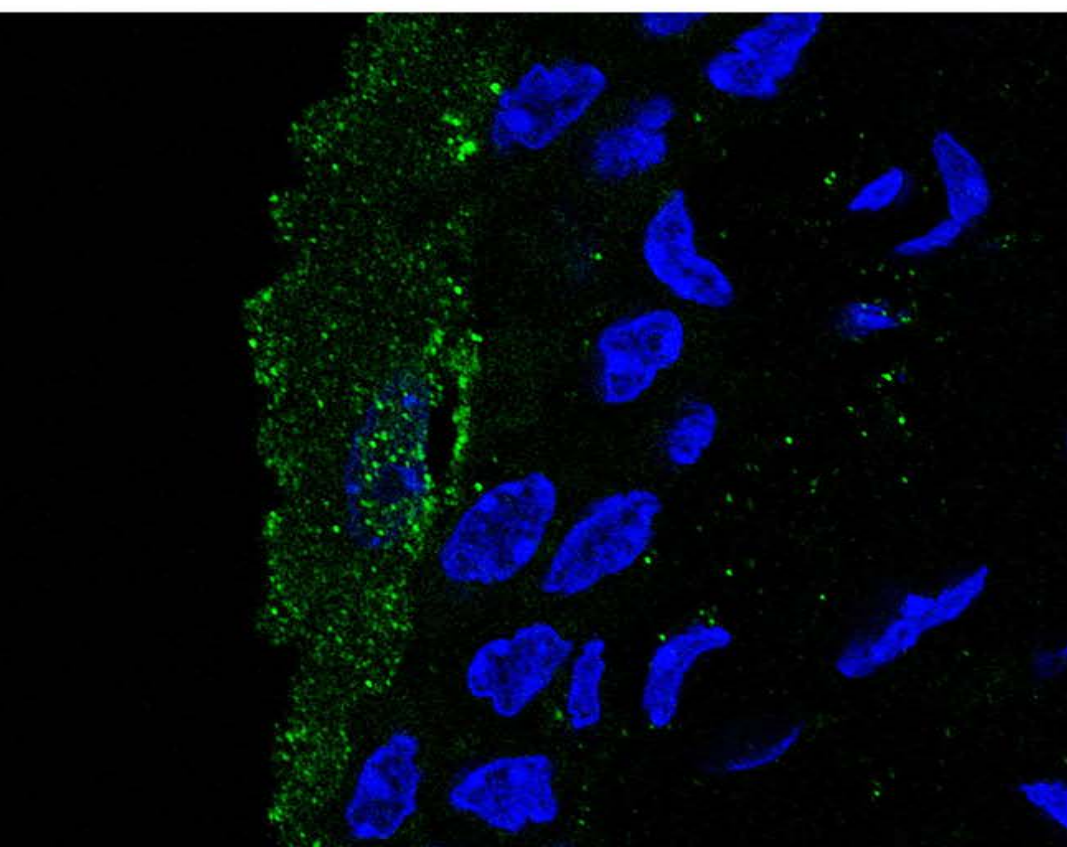
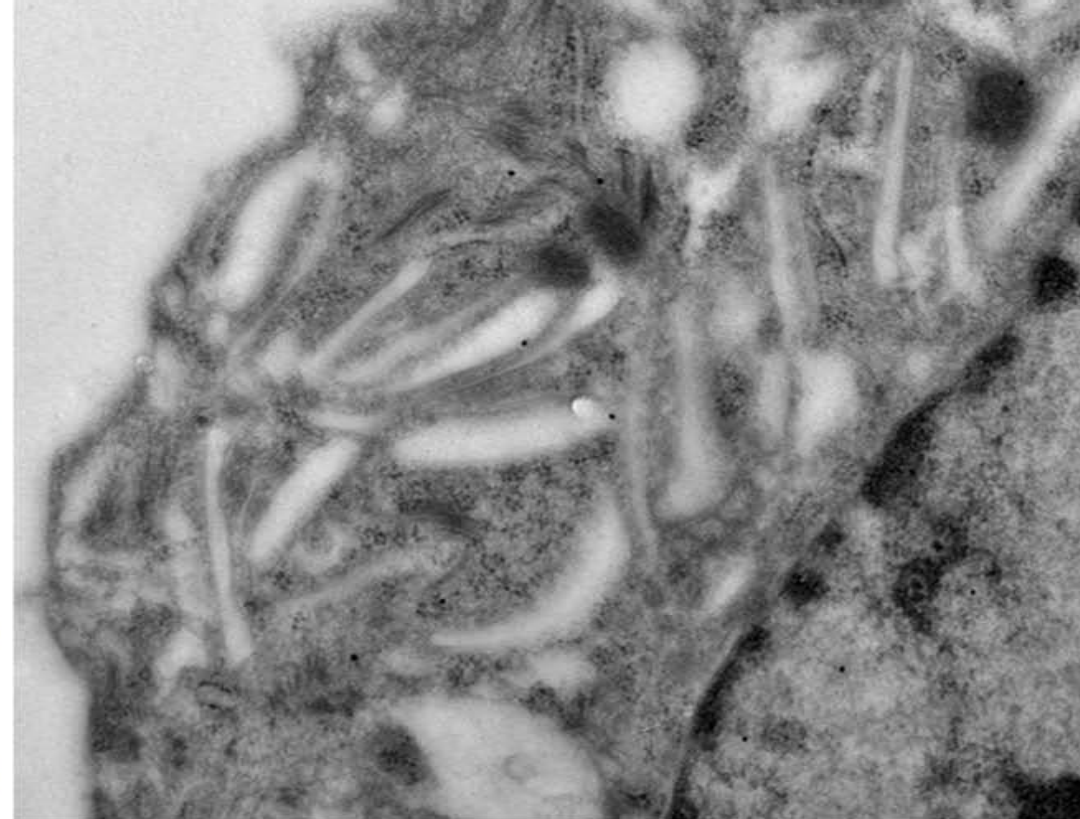
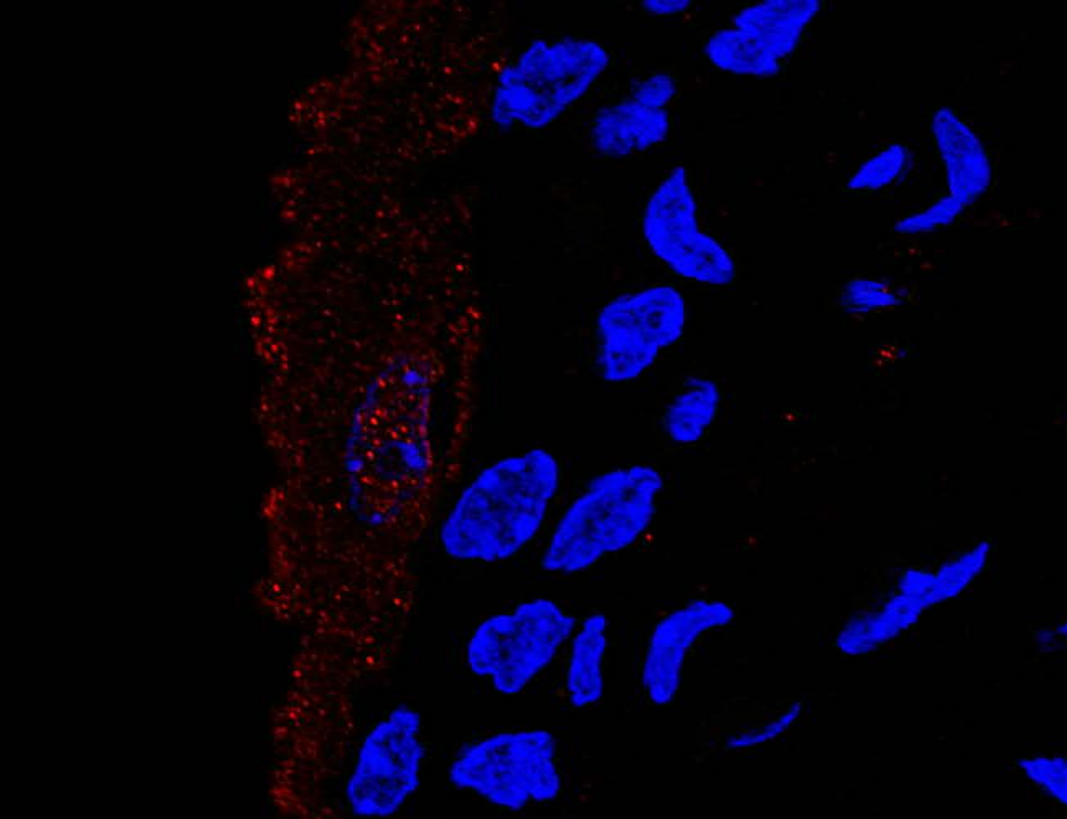
SUNDAY	MONDAY	TUESDAY	WEDNESDAY	THURSDAY	FRIDAY	SATURDAY
12	29	30	1	2	3	4
5	6	7	8	9	10	11
12	13	14	15	16	17	18
	Indigenous Peoples' Day	American Society of Human Genetics Annual Meeting				
19	20	21	22	23	24	25
NAVBO Conference: Vascular Biology 2024						ACVP...
26	27	28	29	30	31	1
... ACVP (American College of Veterinary Pathologists) Annual Meeting				Society for Advancement of Chicanos/Hispanics and Native Americans in Science (SACNAS)		
					Halloween	
2	3	4	5	6	7	8





# November 2025

SUNDAY	MONDAY	TUESDAY	WEDNESDAY	THURSDAY	FRIDAY	SATURDAY
9	27	28	29	30	31	1
				Society for Advancement of Chicanos/Hispanics and Native Americans in Science (SACNAS)		
					Halloween	
2	3	4	5	6	7	8
			American Society of Nephrology Meeting (Kidney Week) ...			
Daylight Saving Time Ends		Election Day				2025 American Heart Association ...
9	10	11	12	13	14	15
... (Kidney Week)						
... 2025 American Heart Association Annual Meeting						SFN ...
		Veterans Day				
16	17	18	19	20	21	22
... SFN (Society for Neuroscience) Annual Meeting						
American Society for Matrix Biology (ASMB) Biennial Meeting						
			ABRCMS: Annual Biomedical Research Conference for Minoritized Scientists			
23	24	25	26	27	28	29
				Thanksgiving Day		
30	1	2	3	4	5	6





# December 2025




SUNDAY	MONDAY	TUESDAY	WEDNESDAY	THURSDAY	FRIDAY	SATURDAY
7	1	2	3	4	5	6 Cell Bio 2025 ...
7	8	9	10	11	12	13
... Cell Bio 2025: The American Society for Cell Biology Conference						
14	15	16	17	18	19	20
	Hanukkah					
21	22	23	24	25	26	27
			Christmas Eve	Christmas Day		
28	29	30	31	1	2	3
			New Year's Eve	New Year's Day		
4	5	6	7	8	9	10



---

## The Histochemical Society



Follow for updates about meetings, programs, grants, and awards

-  @HistoChemicalSociety
-  @HistoChem
-  [info@histochemicalsociety.org](mailto:info@histochemicalsociety.org)

---

## The Journal of Histochemistry & Cytochemistry

Follow for announcements about recent publications including editor's choice, article highlights, special issues, advances in brief and more

-  @JHC.org
-  [johc@histochemicalsociety.org](mailto:johc@histochemicalsociety.org)

Submit an article:  
<https://jhc.msubmit.net/cgi-bin/main.plex>

